



### Term Three Calendar of Events

#### Week 3

28th July Monday - Rimu Assembly- 2:15pm -3.00pm  
31st July Thursday - 9-10am- Early Years Whānau Literacy Workshop  
5:30-6:30pm- Early Years Whānau Literacy Workshop  
1st August Friday- Kauri Assembly- 2:15pm -3pm

#### Week 6

25th August Monday - Math-a-thon Launch!  
22nd Aug Friday -Kauri Assembly

#### Week 7

25th August Monday - Rimu Assembly

#### Week 9

8th September Monday- Rimu Assembly  
12th September Friday -Kauri Assembly

#### Week 10

17th September Wednesday - Inquiry Community Event 2-3pm (more details to be provided closer to the time but parents might want to pencil this time in to make sure they are available)

19th September Friday - Term 3 ends at 3.00pm

### A Word from our Principal



Tenā koutou e te whānau,

We are now in the second week, but welcome everyone to term three! With this term being 10 weeks long with no long weekends, the staff are looking forward to enjoying a sustained burst of ongoing learning.

Thank you to everyone who was able to take the time to meet with their child’s teacher last week. Helping children to reach their full potential is the job of both home and school and having the opportunity to discuss progress, achievement and future goals is critical to this process.

Visitors to the school may have noticed the new goals on the turf. Money for these came from everyone’s fundraising efforts this year so thank you to you all with your assistance with all of our money-making activities and of course to the FAB organising team who plan and oversee these events. FAB funds will also be contributing to the Year 6 Camp which took place last term. This money helps pay for all of the adult whānau members who accompany the staff and make the experience safer and more valuable for the children.

Our Inquiry focus for term 3 has the title ‘Our Identity, Our Adornments’ Around the world people adorn themselves to show who they are and we can create adornments that reflect our identity. We have a number of fun activities planned as part of this focus including a visiting group and special sharing time near the end of the term. Watch out for more information about these in the weeks to come.

Lastly, thank you to everyone who contributed to our ‘Jammies for June’ collection. We were able to donate a large box of pyjamas to those less fortunate and I am sure that they will be appreciated as the cold weather is well and truly here.

Ngā mihi maioha,  
Neil Robinson  
Principal



# ATTENDANCE CELEBRATION

Week 1: 74% attended regularly  
(more than 90%)

Kia ora, Mālō e lelei, Bula vinaka, Talofa lava, Kia orana, Fakaalofa lahi atu, Malo ni, Halo olgeta, Namaste, Xin chào, Kumusta, As Salam a laykom, 안녕하세요 (Annyeonghaseyo), 你好 (Nǐ hǎo), வணக்கம் (Vanakkam), ಸವಸವೆ (Sawasdee), מילש (Shalom), Bonjour

Our school's goal is for every student to attend school at least 90% of the time – that's no more than 5 days away per term.

We're aiming for 75% of our students to achieve this.

Last term, 69% of our students met that goal. This term, we're stepping it up 🌟

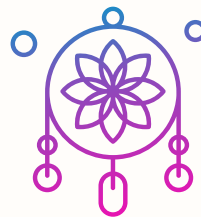
Keep an eye out – we'll be sharing weekly updates on Hero and Facebook about how we're tracking. Thanks for your support.

## Term 3 Inquiry - Our Identity, Our Adornment

This term we are exploring adornments. Our big idea is Around the world people adorn themselves to show who they are. We can create adornments that reflect our identity.

The lines we will inquire into

- Exploring adornments
- Māori adornments
- Creating an adornment to reflect your identity



We will be holding a Gallery Walk, which is our Community Event this term. You are invited to school on Wednesday 17 September 2pm-3pm to look at the adornments the children have created. More details to come.

**Our He Manu Rere focus is 'Know me'**

Unique Identity  
Whānau  
Resilient  
Confident

Know Me

# Winter Field Day 2025



Winter Field Day was a big success with Blockhouse Bay taking 90 Year 5 and 6 children competing in hockey, football, rippa rugby and netball. We all had competitive games against other schools. It was great to see our tamariki demonstrate teamwork, sportsmanship and a competitive spirit. See below for some of our results. Once again, a huge thank you to our wonderful parents that coached and supported our teams.

**Hockey- Blockhouse Bay Blue Sticks placed 1st= in B Grade**

**Rippa Rugby- Blockhouse Bay Lion placed 1st= in B Grade**

**Netball - Blockhouse Bay Pearls placed 2nd= in B Grade**



## 2026 TERM DATES

We like to remind parents about when our terms are, so that they can plan their holidays in the break times. Unless the Ministry of Education changes our dates, these will be our organisation for next year:

### **Term One - Monday 9th February to Thursday 2<sup>nd</sup> April**

Monday 9th February - Meet the Whanau meetings

Tuesday 10th February - All children start school

Friday 3rd April- Good Friday (No school this day)

### **Term Two - Monday 20th April to Friday 3rd July**

ANZAC Day Monday 27th April (No school this day)

Monday 1st June - Kings Birthday (No school this day)

### **Term Three - Monday 20th July to Friday 25th September**

### **Term Four - Monday 12th October to Friday 18th December**

Monday 26th October - Labour Day (No school this day)

# The new Mathematics and Statistics Curriculum



The **refreshed New Zealand Curriculum for Mathematics** came into effect in January, and our teaching team has been actively implementing it across all year levels throughout the year.

Our long-term plans are, wherever possible, linked to our **Inquiry themes**. This approach helps our learners see that maths isn't a stand-alone subject, but something that is relevant and useful in the real world.

To ensure our teachers are well equipped to deliver the refreshed curriculum, all staff have taken part in **two full-day professional development sessions**, led by our school's Maths Team. These sessions focused on deepening our understanding of the new curriculum's expectations and on improving effective, engaging practices for the classroom.

We've also made the most of the **Ministry of Education's free resources**, including the introduction of Numicon into our teaching programmes. **Numicon** is a highly regarded multi-sensory resource. It uses visual and tactile materials to help children build a strong understanding of number concepts.

## World Vision - 40 Hour Challenge

We're excited to share that our school **raised an incredible \$2,734 for World Vision this year!** This fantastic achievement came from the efforts of our students who took on the 40 Hour Challenge – going offline to raise awareness and funds.

Our amazing student leadership team also hosted a cookie fundraiser, **adding \$276 to the overall total**. Ka mau te wehi!

This year, the money we raised will go towards supporting communities in the Solomon Islands, helping provide essentials like clean water, nutritious food, education, and healthcare.

**Ngā mihi nui to everyone** who took part, donated, or supported in any way. Your kindness and commitment are helping change lives.



# BOARD OF TRUSTEES ELECTIONS

Preparing for the 2025 Board Elections

Have we got your correct email address?

Earlier in the year, we asked parents to update all of the details that we have on file for them including address, phone numbers and email addresses. We also asked everyone to check that their emergency contact details were accurate as well. There were a number of reasons why we asked people to do this including so that parents could take part in our Board Elections.

Parents can now submit their nominations for Board Members which means our elections are close so if your email address is not up to date, now is the time to let us know. If you do not have an email address Schooled will post the nomination and voting papers to you, please talk to our office staff if not received.

Do you wish to find out more about being a Board member?

You can also find information on the role of boards by [clicking on this link](#)

If you have any questions about what the board does, please feel free to ask at the office how to contact the Presiding Member Nick Dempsey, or one of our current board members - Rosie Williams, Simon Mahoney, Annuncia Gallaher, Tarawhati Williams, or Jane Warne.

Nominations are now open

## Protect against measles

Confirmed measles cases linked to overseas travel have recently been identified in Aotearoa.

Low immunity, and the close contact nature of education settings, means one infected person could expose and spread measles to many others.

To be immune, you must have had measles before or have had two doses of a measles vaccine after the age of 12 months.

Te Whatu Ora | Health New Zealand is encouraging school kaimahi to look for the signs and symptoms of measles and to encourage families to check their immunisation status:

[Measles: Locations of interest in Aotearoa New Zealand – Health New Zealand](#)  
[My Health Record – Health New Zealand](#)  
[Measles immunity – Health New Zealand](#)



## Food Orders

These are organised by the Fundraisers at Blockhouse Bay (FAB) Team and are a great way to keep the income for this group coming in as they receive a small amount of money for each order. Ordering can be completed through Kindo so please ask the office if you are unsure of how to do this. The following dates outline what can be ordered and when:

### **Pita Pit - ordering closes 9am on the day**

Wednesday 6th August

Wednesday 27th August

Wednesday 17th September



### **Mai Sushi - ordering closes 12pm the day before**

Wednesday 13th August

Wednesday 3rd September



### **Xi'an Food Bar - ordering closes 12pm the day before**

Wednesday 30th July

Wednesday 20th August

Wednesday 10th September



## The Final Word

A big thank you to the FAB team and everyone who has supported their fundraising efforts this year. The team were recently thrilled to be able to donate new goals for the turf which will be used by our children and the community, after the previous ones became unsafe to use. Pictured are some members of the organising team who plan and run our events (and their children). If you would like to join this team of volunteers, or you have access to any goods or services that could be donated to them, please email [the FAB at fab@blockhousebay.school.nz](mailto:fab@blockhousebay.school.nz)

Thank you



# Oops.... kerbed your wheel?



- Mobile alloy wheel repairs - I come to you in West Auckland/CBD
- Fast, efficient service - most wheels repaired in under an hour
- Affordable - standard repairs start at \$120 (incl. GST) per wheel
- Custom colour change available - with or without repair

Call Alan on 022 539 3729 | 0800 KERBED  
alan.edwards@wheelmagician.co.nz

www.wheelmagician.co.nz



Lots of people will tell you that having a Will is important for everyone and especially parents. We never know when things might happen and so we are encouraging our families to take action to make sure that the people are well looked after should something awful happen.

One company that helps families prepare Wills online is called **Footprint** and you can access their website to find out more by [clicking here](#).

Footprint has told us that if supporters of our school community register for a Footprint online Will, they will receive a 15% discount off retail product rates and then make a one-off \$10 payment to our school.

Families are encouraged to look closely at what Footprint has to offer and make a Will if they do not have one.



Blockhouse Bay  
Primary School  
We Seek - We Strive - We Sear



## Protect Your Family's future With a Footprint Online Will!

Thanks to Blockhouse Bay School you can get a **15% discount** on a legally valid Will, **PLUS** Footprint will donate **\$10** to the school for each Will purchased!

### 1. Create

Create your Will with easy to follow questions.

### 2. Review & sign

Our professionals review your Will before you sign & witness.

### 3. Store

Store it with us for free in a flood and earthquake proof location.

### 4 Reasons to get your Will in place

- ✓ Protect your loved ones from financial stress
- ✓ Decide who looks after your kids
- ✓ Reduce the time and costs for your loved ones to settle your estate
- ✓ Have your say in who gets your 'stuff'



Scan or click here to get started

<https://partners.myfootprint.co.nz/edu/blockhouse-bay-primary>

#### Single Will

**\$85** one-time

- ✓ An online Will
- ✓ Wills reviewed by professionals
- ✓ Physical storage of the Will
- ✓ Added to the NZ Will registry
- ✓ Discounts on trusts & EPAs
- ✓ Service support

#### Will It Package

**\$72** per year

Everything found in Single Will and...

- ✓ Annual Will update
- ✓ Digital vault with 1GB of storage
- ✓ Will notifications
- ✓ Short videos on estate planning
- ✓ Access to the rewards program

On average it takes just 15 minutes to complete a Footprint Will.

info@myfootprint.co.nz

0800 366 877

www.myfootprint.co.nz

  
AUCKLAND  
ORTHODONTICS

*Specialist orthodontics for all ages*



 **Dr Nitin Raniga**

BDS (Otago) DClinDent (Otago) MOrth RCSEd MRACDS (Orth)

ORTHODONTIST

6 Exminster St  
Blockhouse Bay  
Auckland 0600

Phone 09 627 3555  
nitin@aucklandortho.co.nz  
www.aucklandortho.co.nz



# Spark

your child's love of science with a  
Little Scientists birthday party!

Goo  
Acids & bases  
Dry ice



1 hour of hands on experiments that  
each child completes. Fizzing,  
popping and foaming fun!

[www.littlescientists.co.nz](http://www.littlescientists.co.nz)



## GET TO KNOW THE WHAU

12.30pm - 2.30pm  
Saturday 2 August  
New Lynn Community Centre



Meet the community organisations working hard to make  
the Whau a great place to live!

