



A Word from our Principal



Term 2 Highlights

Week 2

Monday 27th April - ANZAC Day recognised.

School Closed

Thursday 30th April - Kauri Beach Clean up

Week 3

Monday 4th May - Kōwhai Beach Clean Up

Tuesday 5th May - Tōtara Assembly 2.15pm

Friday 8th May - Kauri Assembly 2.15pm

Week 4

Monday 11th May - Kōwhai Assembly 2.15pm

Friday 15th May - Pink Shirt Day (more details out closer to the time)

Week 5

Thursday 21st May - School Cross Country - more information to be provided soon

Week 6

Monday 25th May - Kōwhai Assembly 2.15pm

Thursday 28th May - Postpone date school cross country

Friday 29th May - Teacher Only Day - School Closed

Week 7

Monday 1st June - Kings Birthday - School Closed

Tuesday 2nd June - Tōtara Assembly 2.15pm

Friday 5th June - Kauri Assembly 2.15pm

Week 8

Monday 8th June - Kōwhai Assembly 2.15pm

Week 9

Tuesday 16th June - Tōtara Assembly 2.15pm

Week 10

Friday 26th June - Kauri Assembly 2.15pm

Week 11

Last day of term 2 is at 3.00pm on Friday 3rd July

Dear Parents and Whānau,

We are back at school and learning is humming along in every Manu Group.

Today, we held a Pōwhiri (welcome) for our new families. A huge welcome to our new whānau! The whole school took part in the haka and waiata and sounded beautiful.

The new term brings a whole range of new learning experiences and we look forward to sharing these with you, both in newsletters and Hero posts. Please look out for these and make a note of the highlights listed on this page so that you are aware of what is happening at school.

A reminder that teachers are in meetings or preparing for the day before school and so we ask that children do not arrive before 8.15am unless they are going to Bizzy Bodz.

We are now well and truly into Autumn so ask that children have raincoats and umbrellas available to them so that they don't arrive in class with wet clothes in the mornings.

A reminder that **Monday 27th April** is when ANZAC Day is recognised in New Zealand and so the **school will be closed**. A reminder too that school will be closed on Friday 29th May for a teacher only day. This provides a 4-day weekend for our families as Monday 1st June is a public holiday for King's Birthday.

Ngā mihi maioha, (thank you with appreciation)

Neil Robinson

Principal

Pōwhiri

On the first Thursday of every term, we have a special welcoming ceremony for children, families and staff who are new to Blockhouse Bay School.

It was great to see how many whānau members who were able to join us for this occasion today.

Welcome to you all!



Evacuation and Lockdown Drills

Each term we practise our Evacuation and Lockdown procedures to make sure that everyone knows what to do if we have an emergency.

If we ever had a real reason to have an evacuation or lockdown, we would communicate with you through Hero and via school's Facebook page about what was happening and how you could support us with the steps we would need to take. When this happens we ask parents not to contact the school over the phone as staff members will be busy dealing with the situation and keeping everyone safe.

In a drill later in the term, we will send a 'Practice Text' to our parents to check that everyone can receive these. This will be similar to the emergency texts that come to everyone if there is a wider emergency. More information will be shared with you about this when it is about to take place.

You might want to discuss what we do at school with your child and could expand this to talking about what you might do in an emergency at your house if you think it is appropriate for their age.



Food orders



FAB Lunch fundraisers return for Term 2

All open & available to order for the term and pay via Kindo app/website now.

Mai Sushi - ordering closes 12pm day before

Week 1 Wed 22nd April

Week 4 Wed 13th May

Week 7 Wed 3rd June

Week 10 Wed 24th June

Pita Pit - ordering closes 7.30pm day before

Week 2 Wed 29th April

Week 5 Wed 20th May

Week 8 Wed 10th June

Week 11 Wed 1st July

Xi'an Food Bar - ordering closes 12pm day before

Week 3 Wed 6th May

Week 6 Wed 27th May

Week 9 Wed 17th June

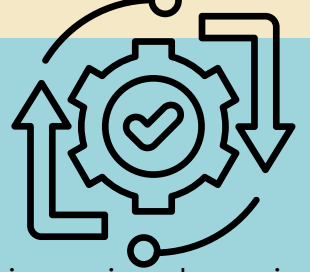
How do you pay?

You pay through an app called Kindo. If you don't have Kindo it is very easy to set up by registering on the Kindo website, go to mykindo.co.nz/Register or download the app available on Apple and Android. If you need any help you can ask our friendly office staff.

Thank you from the Office Team



Property Update



Retaining Wall - although we have lost some days because of rain, this project is moving along nicely and so far, we are on track to have this completed by August of this year. We do understand that there is noise and inconvenience for us all, but this is essential work and the contractors are doing a great job of moving this project along as quickly as possible.

Health and Safety Reviews - As part of our hazard identification programme, we had an outside contractor inspect our playgrounds over the holiday break. He identified several areas that require our attention and visitors to the school may have noticed that we have cordoned off some of our equipment while these matters are being addressed. We will update you all on this as more information comes to hand and remediation plans are in place.

Fale Playground - Some time ago, we identified that the 'hump' was not in a good state and so we had a contractor come in and take it away. We think he has done an excellent job and it now looks much tidier.

Basketball Goals - In the holidays, two new basketball goals were installed next to the bush area behind the Manukau block classrooms. With the playground space being reduced, this should provide more areas for the children to play during break times.

Additional Fencing - For safety reasons, additional fencing needs to be installed in certain areas of the school. This was not a preferred option but the safety of the children always needs to be our priority. Initially, in the Te Hapori / Fale Playground area, this will be temporary fencing, and the Ministry of Education will decide later in the year whether or not more permanent fencing is required.



Who Likes Honey?

The school has its own beehive behind the Kōtare classrooms and we use this to make our own honey. Families can purchase this honey from the school office for the very reasonable price of **\$5 cash only** a pot(500ml). Limited stock available so move quickly if you would like to buy some school honey!



Please do not allow your child to bring toys to school

We ask that Toys and collectable cards are not brought to school. Disagreements over ownership or damage can take place between the children and so we ask that they do not come to school unless they are part of a presentation to other class members. In such cases, the teacher will look after them until the end of the day.



Oops.... kerbed your wheel?



- **Mobile** alloy wheel repairs - I come to you in **West Auckland/CBD**
- **Fast**, efficient service - most wheels repaired in under an hour
- **Affordable** - standard repairs start at **\$120 (incl. GST)** per wheel
- **Custom** colour change available - with or without repair

Call Alan on 022 539 3729 | 0800 KERBED
alan.edwards@wheelmagician.co.nz

www.wheelmagician.co.nz




**AUCKLAND
ORTHODONTICS**

Specialist orthodontics for all ages




Dr Nitin Raniga

BDS (Otago) DClinDent (Otago) MOrth RCSEd MRACDS (Orth)

ORTHODONTIST

6 Exminster St
Blockhouse Bay
Auckland 0600

Phone 09 627 3555
nitin@aucklandortho.co.nz
www.aucklandortho.co.nz



Sheri Cain
021 267 9725

Want to know the
current value of your
property ?

CONTACT ME TODAY

**BARFOOT
THOMPSON &**
AN REEF PROPERTY





**Blockhouse Bay
Primary School
TERM 2 2026**

Years 3-6



Book online at:
enrolmy.com/plus-five

plus5.co.nz

Starting Tuesday 28th April

Tuesday

Bounce, Pass & Play!

Get ready to move, laugh, and play in this high-energy sports class where kids enjoy loads of fun games while learning the basics of football, netball, and basketball. This class is all about building confidence, coordination, and teamwork in a supportive and encouraging environment. Whether they're scoring goals or shooting hoops kids will stay active and discover the joy of sport. Game on!



Move it
Tuesdays

Plus 5 Specialty classes are available for children in Years 3-6 and run for six weeks.

Afternoon tea will be provided.

All children are to meet in Te Whau on the stage - use the back door next to the pool.

After Plus 5 class, pick up is near the school turf.

The specialty classes will need a minimum number of 8 children to start and have a maximum of 20 per class.

Time: 3.00pm - 4.45pm
Meet at Te Whau

Cost: 6 weeks - \$120.00
(\$20.00 per session)

If you require care between 4.45pm - 6.00pm, please contact our Head Office. Move it sessions will run each Tuesday from the 28th April to the 2nd of June.

For any queries please contact Head Office on 021 245 0161 or email: admin@plus5.co.nz

